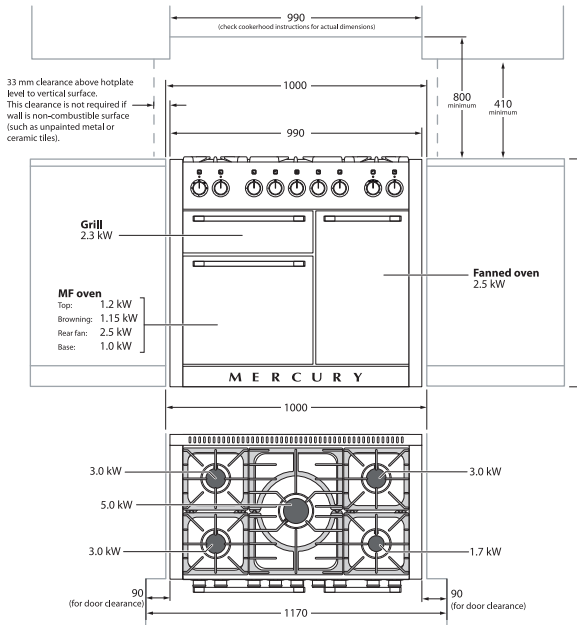


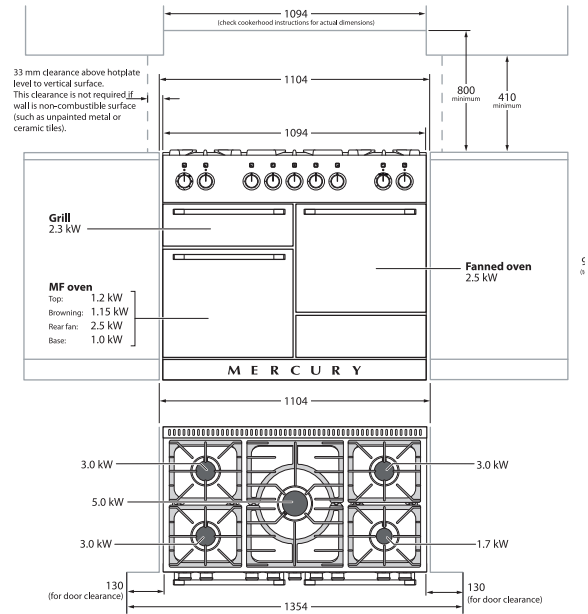
SPECIFICATIONS

MODEL	Mercury 1000	Mercury 1100	Mercury 1200 - Dual Fuel	Mercury 1200 - Induction
Dimensions in mm				
WIDTH mm	990mm	1094mm	1190mm	1190mm
DEPTH (excluding handles) mm	638mm	638mm	638mm	638mm
DEPTH (including handles) mm	700mm	700mm	700mm	700mm
HEIGHT (to top of side panels) mm - Min/Max	920-945mm	920-945mm	920-945mm	920-945mm
EXTENDED SIDE TRIMS (panels) - Yes/No	Yes	No	Yes	Yes
POWER RATINGS - HOB	3 x 3kW / 1 x 1.7kW / 1 x 5kW	3 x 3kW / 1 x 1.7kW / 1 x 5kW	3 x 3kW / 1 x 1.7kW / 1 x 5kW	1 x 3.7kW / 3 x 3.0kW / 1 x 2.2kW
TOTAL HOB RATING	15.7 kW	15.7 kW	15.7kW	11kW
GRILL	1 x 2.3kW	1 x 2.3kW	1 x 2.3kW	1 x 2.3kW
OVEN (LH)	1 x 2.5kW	1 x 2.5kW	1 x 2.5kW	1 x 2.5kW
OVEN (RH)	1 x 2.5kW	1 x 2.5kW	1 x 2.5kW	1 x 2.5kW
INTERNAL OVEN (LH)	465 x 383 x 382mm	465 x 383 x 382mm	465 x 383 x 382mm	465 x 383 x 382mm
INTERNAL OVEN (RH)	296 x 386 x 575mm	465 x 383 x 433mm	465 x 383 x 433mm	465 x 383 x 433mm
OVEN CAPACITY (LH)	68 litres	68 litres	68 litres	68 litres
OVEN CAPACITY (RH)	66 litres	78 litres	78 litres	78 litres
POWER SUPPLY	32.2A max @ 230V	32.2A max @ 230V	32.2A max @ 230V	32.2A max @ 230V
(50HZ) SINGLE PHASE GAS CONNECTION	1/2" BSP	1/2" BSP	1/2" BSP	1/2" BSP
ENERGY RATINGS				
Multifunction oven (LH)	A	A	A	A
Fan oven (RH)	A	A	A	A

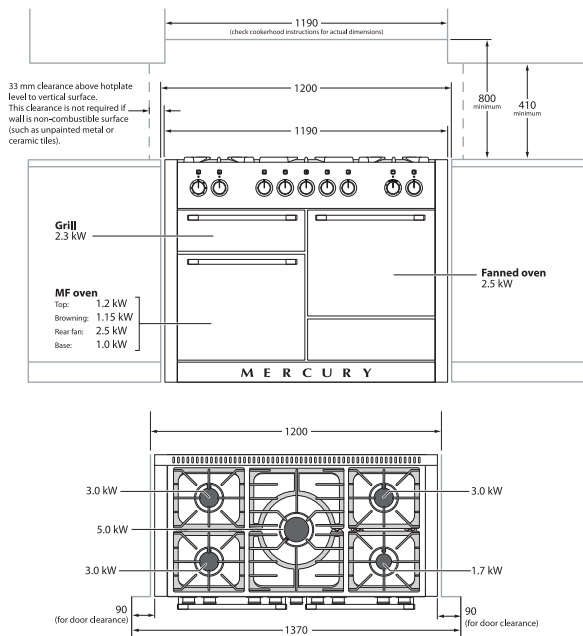
Mercury 1000



Mercury 1100



Mercury 1200



Side View

